

# Ascent Porta Solutions

An ISO 9001:2015 Certified Company

Leading Manufacture  
Of Portable Cabins




## Contact US

+91 9644 342 414

+91 9833 155 890

+91 9589 580 203

 [Sales@asprefab.com](mailto:Sales@asprefab.com)  
[Sales@ascentcabin.com](mailto:Sales@ascentcabin.com)

 [www.asprefab.com](http://www.asprefab.com)  
[www.ascentcabins.com](http://www.ascentcabins.com)

**Workshop Add**  
Unit no.5 , Azmi Compound,  
Sara Colony , Shil-Mahape Rd,  
Shilphata , 400612

Ascent Porta Solutions was established in 2016, making it one of the top manufacturers of portable cabins in Mumbai, Maharashtra. We manufacture different types of cabins and structures in various cities of India including Mumbai, Pune, Nagpur, Goa, Vadodra, Ahmedabad, Chennai, Kolkata, Mangalore, Hyderabad, Bangalore , New Delhi , Orissa and many more.

Ascent Porta Solutions produces a wide selection of prefabricated portable structures including Portable Office , Security Cabin, Accommodation Cabin, portable toilets, Site Office, Portable Shop, Farmhouse , Toll Booth etc.

The Portable Structure Ordered by the clients are customised to meet their requirement.

Our organisation is divided into different sub department like sale and marketing, Design and Development, Manufacturing, Quality control, disptach and logistics. This help us to be more efficient in qulaity and bulk production.

## Core Values

### REAL PURPOSE

#### Core Purpose :

To build communities and develop relationships. To satisfy customers, educate employees, and aid in the success of our partners.

#### Driving Force :

We are driven by the kind of building that enriches the lives of our customers, employees, partners, and communities. We are driven by relationships, trust, responsibility, integrity, passion, and quality.



## Mission

We aim to deliver highly functional and high-quality portable prefabricated structures to our esteemed clients within a stipulated period of time.

## Our Vision

With this vision, we are committed to continuing to be the leader in prefabricated portable structures and providing superior value.

## Problem Solvers

The team at our support center is always on hand to resolve issues if any damage occurs during transportation.

## Customer Support

To provide customer service to consumers and carriers, we have a highly experienced team who can assist with installation and post-purchase support.



## Why Portable Cabin ?

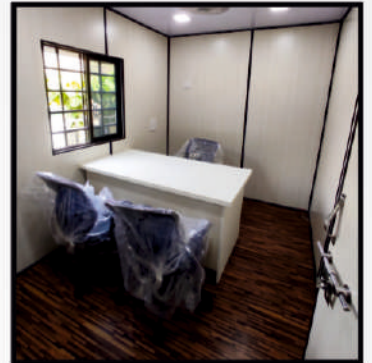
A Portable Cabin is a building designed and built to be movable rather than permanently located. Portable cabins are custom built prefabricated structures manufactured for variety of applications such as site office, security cabin, accommodation, storage, toilets etc. Portable cabins are an affordable alternative to traditional buildings, and of course, they offer a flexible solution where accommodation is required for an uncertain period of time.

From formal office ,accommodation to comfortable eating and relaxation areas, toilet and shower facilities to site security units, Portable cabins are fast to manufacture and easy to deliver.

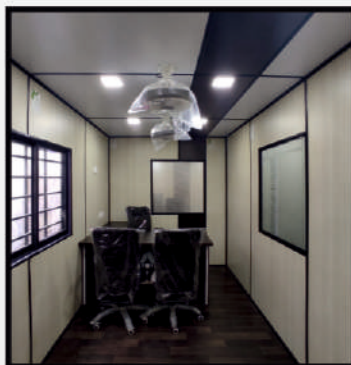
### Advantages & Key Benefits of Portable Cabin:

- i) It takes the least amount of time to construct hence Time Saving
- ii) Flexibility In Dismantling And Relocating Easily Portable
- iii) Made From Resources That Can Be Recycled
- iv) High-Quality Goods
- v) Construction that is sustainable and eco-friendly
- vi) Weather Proof
- vii) Customizable, Can be customized according to users needs
- viii) Economic when compared to Rigid Structures

## Project 1



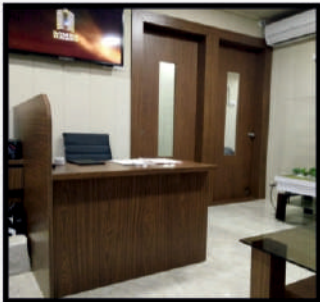
## Project 2



## Project 1



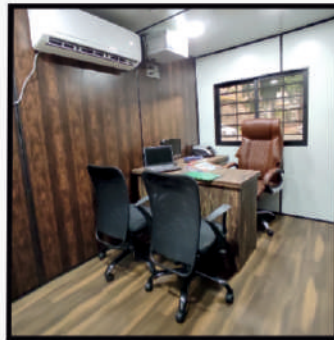
## Project 2



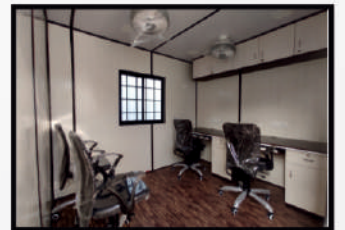
## Project 3



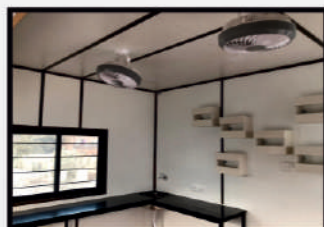
## Office Cabin Internal External ACP



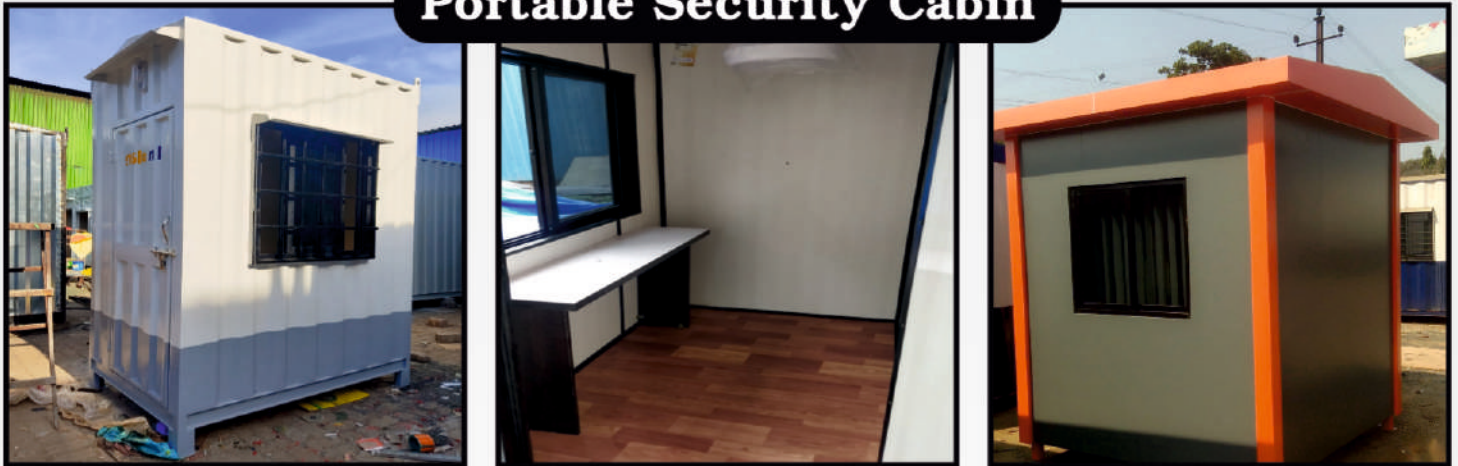
## Containerized Office Cabin



## Portable Pantry Cabin



## Portable Security Cabin



## Portable Toilet Cabin



## Accommodation Bunk Cabin



## Portable Food Court / Shop



## Portable Toll Booth



## Portable Storage cabin with Racks





## Portable School



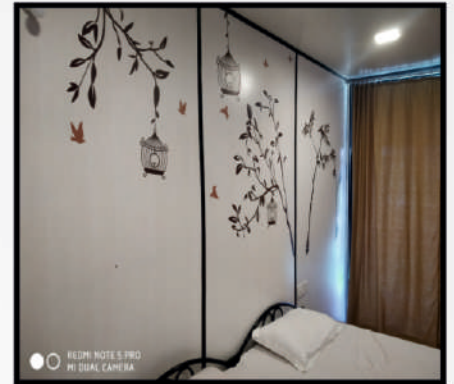
## Portable Clubhouse



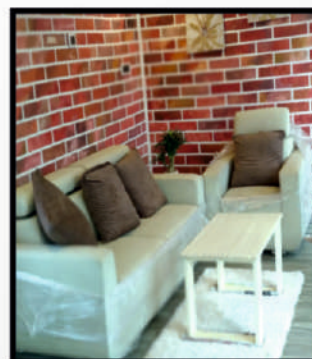
## Portable Pinewooden Farmhouse



## Portable Standard Farmhouse



## Portable Civil Farmhouse



## Sample Flats 1



## Sample Flats 2



## Portable Cabin External View



## Used Shipping Containers



**Portable Swimming Pool**



**Containerized Water Treatment Plant**

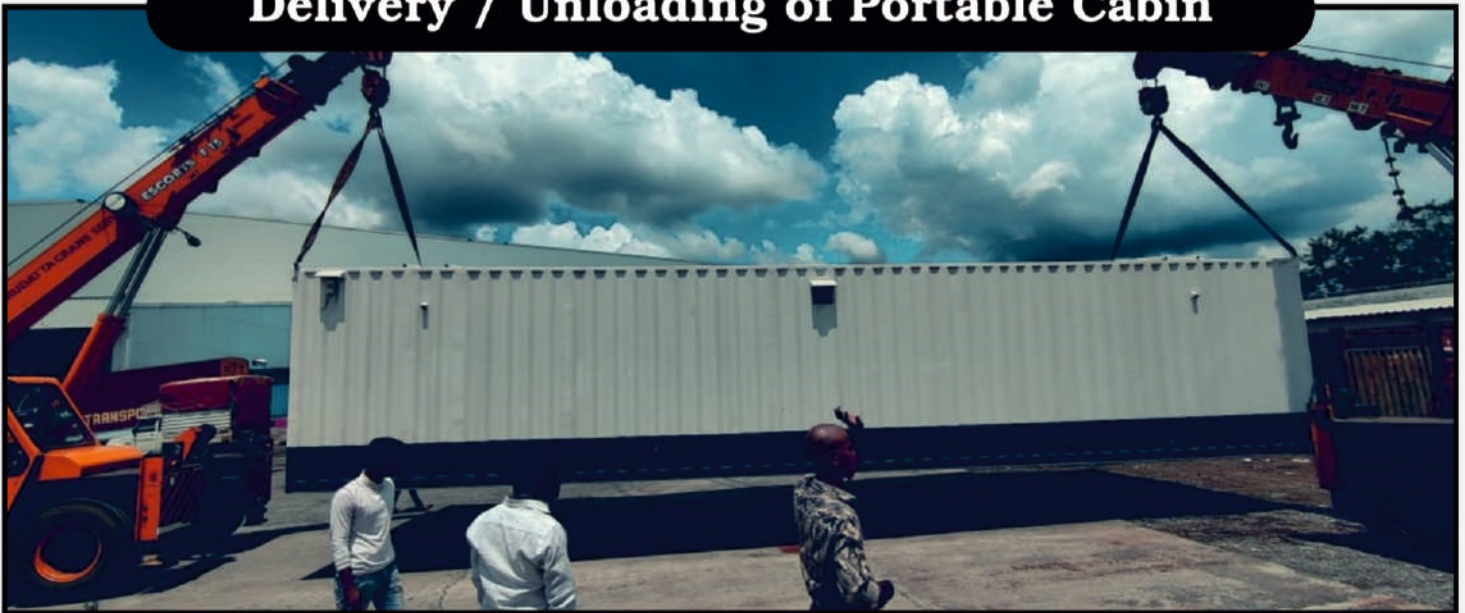


**Containerized Generator**

## Loading / Dispatching of Portable Cabin



## Delivery / Unloading of Portable Cabin



## Delivering Enlarged Cabin in 2 Parts



## · Fabrication Process

- I. Base & Body Preparation by Welding
- II. Outer wall & Roof Erection by Welding
- III. Internal Framing
- IV. Grinding the Welded Joints

## · Flooring

- I. Cement Fibre Board is Fixed by Means of Self Tapping Crew
- Electrical Wiring of the Structure
- I. All electrical wiring Are be concealed.
- II. Suitable copper cables are be used for lighting circuits.
- III. The copper cables used are of 2.5 mm cable for lighting circuits.
- IV. ISI mark and concealed in PVC conduits insulated copper wire are used for wiring to be done in PVC conduit with small size distribution board with MCB protection and to separate with main supply.

## · Body Paint Work

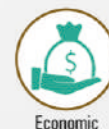
- I. Metal Surface Preparation by Sanding the Metal Surface
- II. Sealing the Joints with Carpatch
- III. Putty Application in Sealed Parts
- IV. Wet Sanding
- V. Applying Primer on Body & Internal Metal Surface
- VI. Applying the Top Coat of Epoxy

## · Paneling

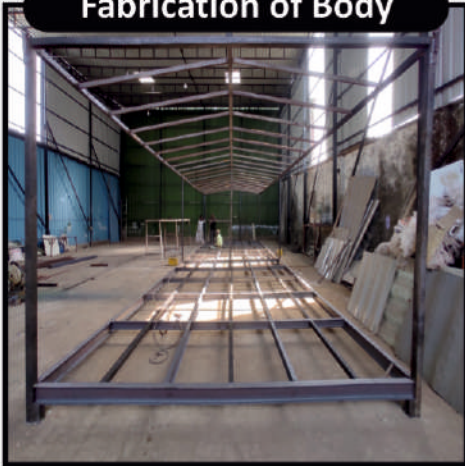
- I. Finalizing the Internal Floor with Carpet
- II. Filling the Insulation Material at walls & False Ceiling
- III. Internal Wall Paneling with Help of Srew Fastner & Aluminium Powder coated sections Paneling
- IV. False Ceiling Paneling with Help of Srew Fastner & Aluminium Powder coated sections
- Attaching the Electrical Accessories like Switch socket main board etc..

## · Cleaning the Cabin

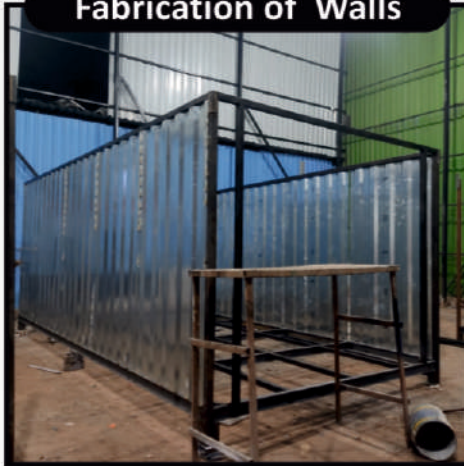
Inspection of Cabin by the Quality Head



**Fabrication of Body**



**Fabrication of Walls**



**Fabrication of Roof**



**Fabrication Internal Framing**



**Concealed Electrical Wiring**



**Inner Insulation**



**Inner Paneling**



**Sealing Joints for Water Proofing**



**Primer Coat**



**Final Paint Coat**



**Completion of Inner Paneling**

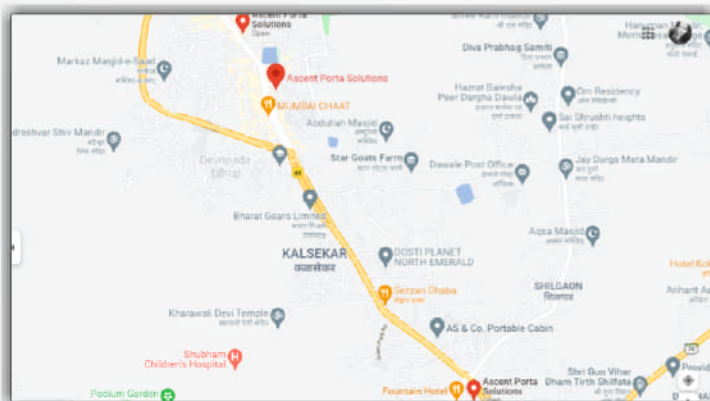
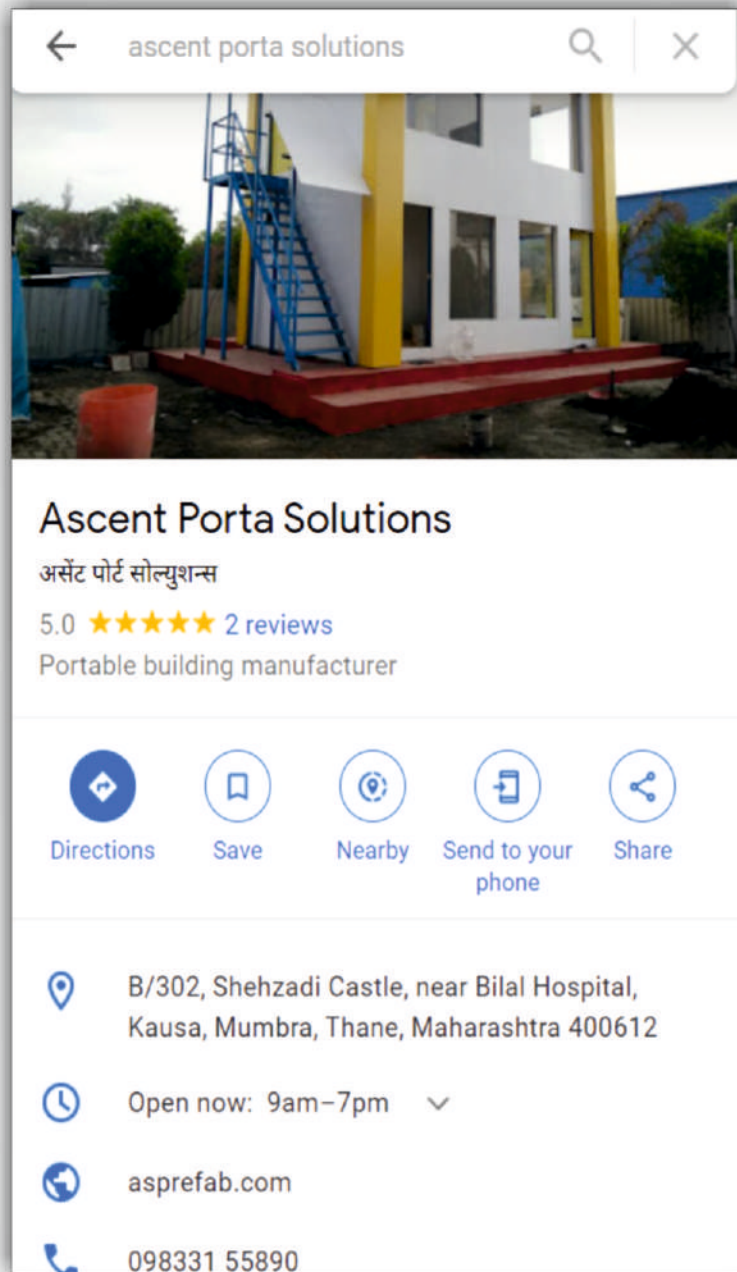


**Final Product**





			
	 <p>clicked at sea-delivered at shore</p>		
			
		 <p>Commitment, Reliability &amp; Quality</p>	 <p>Solar Power Unleashed</p>
			 <p>INFRA PROJECTS PVT. LTD.</p>
		 <p>Canteen Stores Department Government of India   Ministry of Defence</p>	



**Track Us**

**Our Trusted Partner**



**ASCENT**  
CABIN



### Contact Us

+91 9644 342 414 | +91 9833 155 890 | +91 9589 580 203

### Email

sales@asprefab.com | sales@ascentcabin.com

### Website

www.asprefab.com | www.ascentcabins.com

### Reg. Address

B/302, Shehzadi Castle, Near Bilal Hospital, Kausa,  
Mumbra, Thane, Maharashtra 400612.

Follow us on

